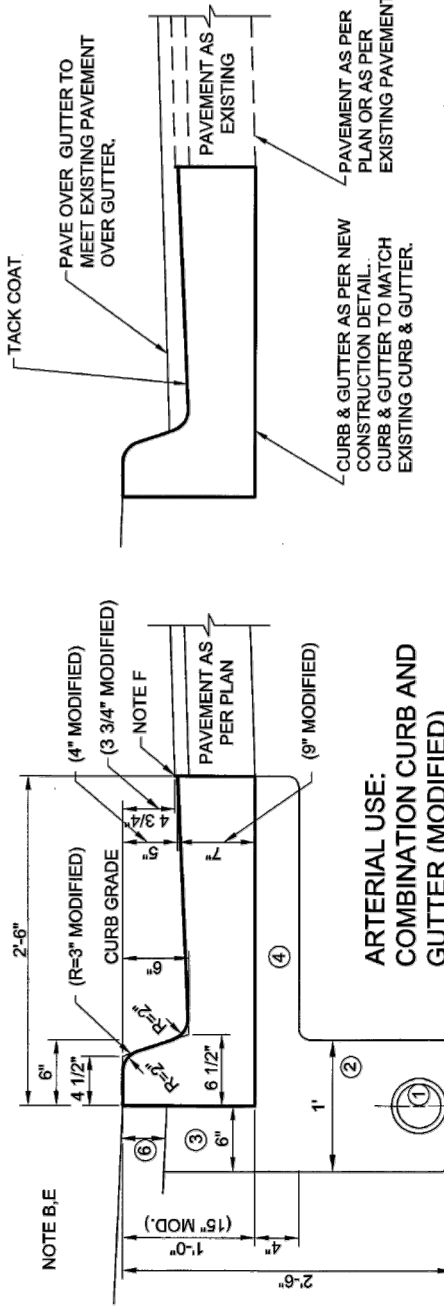
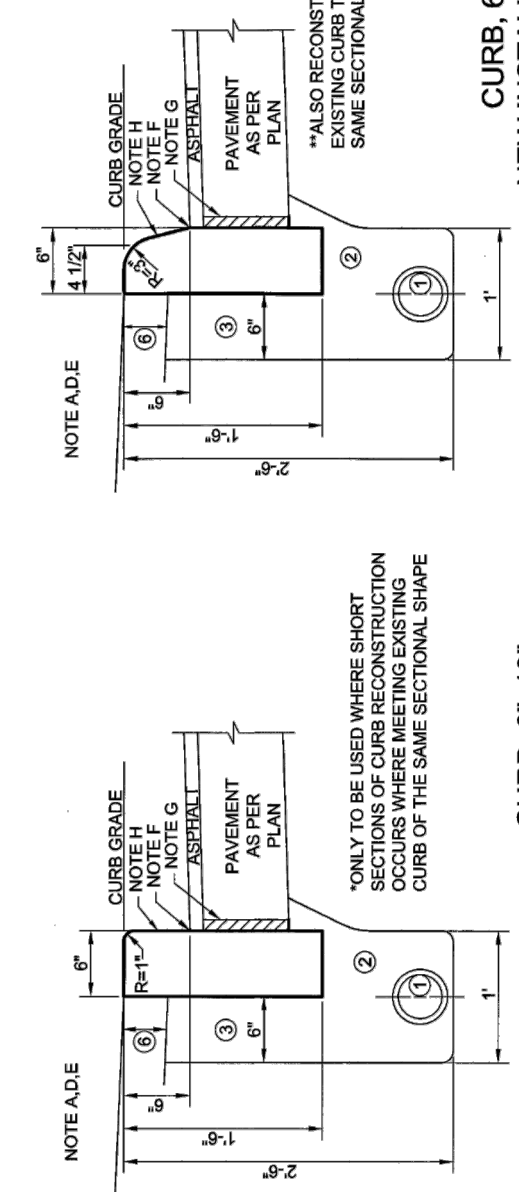


BP-2 CONCRETE CURB AND COMBINED CURB & GUTTERS

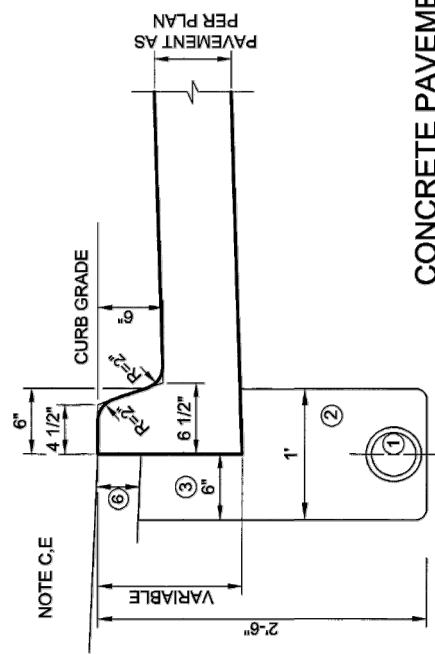


**NEW COMBINATION
CURB AND GUTTER**

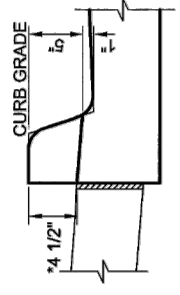


**CURB, 6"x18"
RECONSTRUCTION****

**CURB, 6"x18"
NEW INSTALLATION OR
CURB RECONSTRUCTION****



**CURB, 6"x18"
WITH INTEGRAL BASE
(CURB RECONSTRUCTION)**



**DRIVE APRON CURB
DROP DETAIL**

**CURB, 6"x18"
RECONSTRUCTION**

CURB, 6"x18"

- REFERENCE:**
- ① 4" PIPE UNDERDRAIN, ITEM 564
 - ② No. 8 WASHED GRAVEL, COST INCLUDED IN PRICE OF UNDERDRAIN.
 - ③ GRANULAR BACKFILL MATERIAL AS PER 203.02 TO BOTTOM OF ⑥ COST INCLUDED IN THE PRICE OF CURB.
 - ④ SUBBASE IN ACCORDANCE WITH 310, COST INCLUDED IN PRICE OF CURB.
 - ⑤ AREA OF EXISTING PAVEMENT TO BE REMOVED AND NEW INTEGRAL BASE TO BE CONSTRUCTED, COST INCLUDED IN PRICE OF CURB WHEN HAND FORMING CURB. POUR SEPARATE WHEN SLIP FORMING CURB, COST INCLUDED IN PRICE OF CURB.
 - ⑥ FOR EXISTING BRICK PAVEMENT, UNRAVEL AND THOROUGHLY CLEAN AROUND BRICKS.
 - FOR EXISTING CONCRETE PAVEMENT OR BASE, AND ASPHALT SURFACE, SAWCUT AT LIMITS OF REMOVAL.
 - REMOVE ALL LOOSE MATERIAL FROM AREA OF NEW CONCRETE.
 - ⑥ MAY BE 4" OR 6" WALK, BRICK, TOPSOIL, APRON.

- SPECIAL NOTES:**
- A. PLACE 1/4" CONTRACTION JOINTS AT 10' INTERVALS, BY DIVIDER PLATES OR BY SAWCUT.
 - B. PLACE 1/4" CONTRACTION JOINTS AT INTERVALS OF NOT LESS THAN 10' UNLESS OTHERWISE DIRECTED BY THE ENGINEER.
 - C. JOINTS IN INTEGRAL CURB SHALL BE OF THE SAME TYPE AND AT THE SAME SPACING AS JOINTS IN THE PAVEMENT.
 - D. BOTTOM OF SAW KERF SHALL BE SLOPED TOWARD THE PAVEMENT, AND CUT 2" DEEP FOR COMBINATION CURB & GUTTER AND 4" DEEP FOR 6"x18" CURB. SAWING SHALL BE COMPLETED AS SOON AS CONDITIONS ALLOW.
 - E. PLACE 1/2" EXPANSION JOINTS AT P.C.'s, P.T.'s, INLET APPROACHES (EXCEPT 1' IN CONC. PAVMT.) AND MAX. 300' INTERVALS.
 - F. APPLY SEALER IN ACCORDANCE WITH 451.14.
 - G. ON FOUR LANE AND WIDER PAVEMENTS WITH CONCRETE BASE, PLACE 1" REMODELED EXPANSION MATERIAL.
 - H. FACE OF CURB SHALL BE BROOM FINISHED FOR A MINIMUM OF 7 1/4" FROM THE TOP OF CURB.
 - I. FOR SPECIAL CURB CUT REQUIREMENTS AT CURB RAMPS, SEE DWG No. BP-5.0

- GENERAL NOTES:**
- INTERNAL VIBRATORS SHALL BE USED IN ALL CURB.
 - UNLESS OTHERWISE SPECIFIED ALL EDGES SHALL BE FINISHED TO A 1/4" RADIUS.
 - APPROVED FLEXIBLE STEEL OR WOOD FORMS SHALL BE USED FOR CIRCULAR CURB RADIUS OF 100' OR LESS.
 - ALL CONCRETE FOR CURBS SHALL BE CLASS C, UNIFORM IN SURFACE TEXTURE AS FINISHED WITH LONGITUDINAL LIGHT BROOMING.
 - CURING SHALL BE IN ACCORDANCE WITH 451.11 OR 455.03(e.).
 - COLD WEATHER PROTECTION SHALL BE PER 451.07.

CITY OF AKRON BUREAU OF ENGINEERING	CONSTRUCTION STANDARD DWG. No.
DESIGN DIVISION MANAGER CONSTRUCTION DIVISION MANAGER CITY ENGINEER	BP - 2 CONCRETE CURBS AND COMBINED CURB & GUTTERS
REVISIONS: August 7, 2018	

	Builder: Habitat for Humanity of Summit County 2301 Romig Road Akron, OH 44320	Owner: Habitat for Humanity of Summit County 2301 Romig Road Akron, OH 44320	Revisions:	Project #: 3107-0007	Project Name: VERNON ODOM BLVD & SUPERIOR AVE	
				DATE: 2025-12-23	SHEET NUMBER:	TOTAL SHEETS:

SIDEWALKS, CURB RAMPS, AND DRIVEWAY APPROACHES

GENERAL NOTES FOR SIDEWALKS, CURB RAMPS, AND DRIVEWAYS

GENERAL

- ALL AREAS, ELEMENTS, AND FACILITIES FOR PEDESTRIAN ACCESS, CIRCULATION AND USE THAT ARE CONSTRUCTED, INSTALLED OR ALTERED IN THE PUBLIC RIGHT-OF-WAY AND WHICH ARE SUBJECT TO TITLE II OF THE AMERICANS WITH DISABILITIES ACT (ADA) SHALL COMPLY WITH ALL CURRENT FEDERAL REGULATIONS INCLUDING THE ADA ACCESSIBILITY GUIDELINES (ADAAG).
- NEWLY CONSTRUCTED AND ALTERED STREETS OR PEDESTRIAN WALKWAYS MUST CONTAIN CURB RAMPS AT INTERSECTIONS. (28 CFR 35.151(d)) ALTERATIONS INCLUDE RESURFACING AND ANY WORK THAT IMPACTS THE MAJORITY OF THE STREET OR WALKWAY. THE ENTIRE INTERSECTION EFFECTED MUST BE BROUGHT INTO COMPLIANCE.
- ALL MATERIALS SHALL CONFORM TO THE "CONSTRUCTION AND MATERIAL SPECIFICATIONS" OF THE CITY OF AKRON, DEPARTMENT OF PUBLIC SERVICE, AKRON ENGINEERING BUREAU, LATEST EDITION.
- ALL SLOPES REFERRED TO ARE REFERENCED TO A HORIZONTAL PLANE.
- FOR SIDEWALKS, CURB RAMPS, AND DRIVEWAYS THE "PREFERRED" DIMENSION SHALL BE THE NORMAL STANDARD TO BE MET, UNLESS EXISTING ROW WIDTH OR FEATURES MAKE COMPLIANCE INFEASIBLE. IN THIS CASE THE "MINIMUM" STANDARD MUST BE MET.

PUBLIC SIDEWALKS

- MINIMUM WIDTH OF NEW SIDEWALKS SHALL BE FIVE FEET.
- PREFERRED CLEAR WIDTH OF A CONTINUOUS PASSAGE SHALL BE 48"; FOR ALTERATIONS TO EXISTING ROWS, WHERE THE PREFERRED CLEAR WIDTH CANNOT BE MET, THE MINIMUM CLEAR WIDTH OF A CONTINUOUS PASSAGE SHALL BE 36".
- SIDEWALK CROSS SLOPE SHALL NOT EXCEED 48:1 (2%).

CURB RAMPS

- A TYPICAL CURB RAMP IS COMPOSED OF THE FOLLOWING ELEMENTS: RAMP, LANDING, SIDES, SURFACE, AND INTERSECTION WITH THE ROADWAY.
- RAMP: THE CURB RAMP MUST HAVE A SLOPE OF NO GREATER THAN 12:1 IN THE DIRECTION OF TRAVEL AND A CROSS SLOPE OF NO MORE THAN 48:1. THE MINIMUM WIDTH FOR A RAMP IS 48" (NOT INCLUDING SIDES).
- THE LANDING IS THE LEVEL AREA AT THE TOP OF A RAMP AND MUST NOT HAVE A SLOPE MORE THAN 48:1 IN ANY DIRECTION. THE LANDING AREA IS USED FOR TURNING AND MUST MAINTAIN A PREFERRED LENGTH AND WIDTH OF 60" X 60" FOR ALTERATIONS IN EXISTING ROWS WHERE PREFERRED CLEAR WIDTH CANNOT BE MET. THE MINIMUM LENGTH AND WIDTH SHALL BE 48" X 48". IN ALL CASES, THE TYPE 2 CURB RAMP (PARALLEL) MUST HAVE A LANDING LENGTH OF 60".
- SIDES: THE CURB RAMP SHALL BE FLARED WHEN PEDESTRIANS ARE TO CROSS THE RAMP, OR HAVE CURBING IF THE ADJACENT AREA IS A NON-PEDESTRIAN SURFACE SUCH AS A LAWN STRIP, BRICKWORK, OR OBSTACLE. MAXIMUM FLARE SLOPES ARE 12:1 OR AS DIRECTED BY THE ENGINEER. DIAGONAL CURB RAMPS MUST HAVE WELL DEFINED EDGES THAT ARE TO BE PARALLEL TO THE DIRECTION OF PEDESTRIAN FLOW. A DIAGONAL CURB RAMP MUST ALSO HAVE A MINIMUM 24" SEGMENT OF FULL HEIGHT CURB ON EACH SIDE OF THE RAMP WHICH IS WITHIN THE CROSSWALK LINES OR PEDESTRIAN RIGHT-OF-WAY.
- FLARE TREATMENTS: VARIOUS FLARE TREATMENTS ARE SHOWN IN THE DRAWINGS. IN GENERAL A 12:1 FLARE INCLUDING CONCRETE TO EXTENDED SIDEWALK LINE IS PREFERRED OVER SHORT ROLLED CURBING WHERE POSSIBLE. THIS PROVIDES A CONCRETE WALKING SURFACE THE ENTIRE SIDEWALK WIDTH IN THE DIRECTION OF TRAVEL. ROLLED CURBING ON DIAGONAL CURB RAMPS IS INTENDED TO ACCOMMODATE OBSTACLES OTHER THAN GRASS OR BRICK STRIPS.
- SURFACE: THE CURB RAMP SURFACE MUST BE STABLE, FIRM, AND SLIP-RESISTANT. CHANGE IN LEVEL UP TO 0.25" MAY BE VERTICAL WITHOUT EDGE TREATMENT. CHANGES BETWEEN 0.25 AND 0.5" MUST BE BEVELED WITH A SLOPE OF NO GREATER THAN 12:1. CHANGES IN LEVEL ABOVE 0.5" MUST BE ACCOMPLISHED BY A RAMP. THE FINAL SURFACE TEXTURE SHALL BE ROUGHER THAN THE ADJACENT WALK AND SHALL BE OBTAINED BY COARSE BROOMING OR OTHER METHODS APPROVED BY THE ENGINEER TO OBTAIN STRIATIONS TRANSVERSE TO THE RAMP SLOPE. BROOM FINISH TOOLED JOINTS WITHOUT FILLING IN THE JOINT.
- LIP: THE INTERSECTION OF THE RAMP WITH THE ROADWAY SHALL BE PERPENDICULAR AND EDGES SHALL BE FLUSH. THE COUNTER SLOPE FROM THE END OF RAMP UP THE CROSS SLOPE OF THE ROADWAY SHALL BE NO MORE THAN 20:1 FOR THE FIRST 24".
- NO OBSTACLES OR PROTRUSIONS SHALL BE PLACED WITHIN THE CURB RAMP AREA. EXISTING MANHOLE COVERS, VALVE BOXES SHALL BE FLUSH MOUNTED WITH WALKING SURFACE.
- THE THICKNESS OF ALL NEW CURB RAMPS SHALL BE SIX INCHES.
- TRANSITIONAL SECTIONS OF SIDEWALK SHALL BE INSTALLED TO CONNECT NEW OR REPLACED CURB RAMPS WITH EXISTING SIDEWALKS THAT DO NOT MEET CURRENT STANDARDS AND SPECIFICATIONS. THESE TRANSITION SEGMENTS OF SIDEWALK SHALL PROVIDE A SMOOTH TRANSITION BETWEEN EXISTING AND NEW CONCRETE. MAXIMUM WARPING (ROTATION) RATE SHALL BE 1/8" VERTICAL CHANGE PER LINEAR FOOT. HORIZONTAL DISTANCE TRAVELED AND MINIMUM DISTANCE SHALL BE ONE FULL SIDEWALK BLOCK.
- FOR PARALLEL AND COMBINATION RAMPS WHERE A RAMP IS LOCATED WITHIN THE PUBLIC SIDEWALK, THE MINIMUM LENGTH FOR THE RAMPS SHALL BE ONE SIDEWALK BLOCK LENGTH; AND THE MAXIMUM LENGTH SHALL BE WHAT IS REQUIRED TO MAINTAIN A 12:1 SLOPE TO MEET EXISTING SIDEWALK GRADE. WHEN THIS IS DETERMINED, INFEASIBLE DUE TO STEEP PITCH OF EXISTING ROADWAY, IN NO CASE SHALL THE RAMP BE LESS THAN FIFTEEN FEET.
- STEEP SLOPES: ALL RAMPS LOCATED ON STREETS WITH A RUNNING PROFILE GRADE GREATER THAN 5% MUST BE REVIEWED AND APPROVED BY THE ENGINEER.

13. SLOPE AND CROSS-SLOPE CONVERSION TABLE:



RATIO	PERCENT	INCH/FOOT	DEGREES	WHERE UTILIZED
1:12	8.3	1	4.8	MAXIMUM SLOPE FOR RAMPS AND FLARES
1:20	5.0	3/4	2.9	AT THE FOOT OF THE RAMP, THE TRANSITION FROM THE RAMP TO THE GUTTER COUNTER SLOPE SHALL BE NO MORE THAN 1:20 FOR A MINIMUM DISTANCE OF 24".
1:48	2.0	1/4	1.1	MAXIMUM SLOPE FOR LANDING AND CROSS SLOPE OF LANDINGS, RAMPS AND SIDEWALK

- FOR CURB RAMP STANDARD DRAWINGS TYPICAL DIMENSIONS ARE USED BASED ON A FULL CURB HEIGHT OF 6". ADJUSTMENTS MAY BE MADE TO LENGTH OF RAMPS AND FLARES BASED ON ACTUAL CURB REVEAL HEIGHT. REQUIRED SLOPES MUST BE MAINTAINED.
- WHEN TWO RAMPS ARE USED AT A CORNER IF THE SPACE BETWEEN IS TO BE AN UNWALKABLE SURFACE IT MAY BE GRASSED IF GREATER THAN 20 S.F., OTHERWISE IT SHALL BE FILLED IN WITH BRICK PAVERS.
- TYPES 2 & 3 RAMPS: WHEN BACK CURB HEIGHT IS 4" OR GREATER INSTALL SEPARATE 6"x18" CURB AT THE BACK OF WALK. IF LESS THAN 4" UTILIZE ROLLED INTEGRAL CURB. ROLLED CURB PAID AS 6" WALK.
- DETECTABLE WARNING IS REQUIRED FOR ALL CURB RAMPS. TRUNCATED DOMES SHALL HAVE A DIAMETER OF 0.9" AT THE BOTTOM, A DIAMETER OF 0.4" AT THE TOP, A HEIGHT OF 0.2" AND A CENTER-TO-CENTER SPACING OF 2.35" MEASURED ALONG ONE SIDE OF A SQUARE ARRANGEMENT.
- DOME ALIGNMENT: DOMES SHALL BE ALIGNED ON A SQUARE GRID IN THE PREDOMINANT DIRECTION OF TRAVEL TO PERMIT WHEELS TO ROLL BETWEEN DOMES.
- DETECTABLE WARNING SHALL BE A PREFORMED MATERIAL AS APPROVED BY THE CITY OF AKRON. THE USE OF CONCRETE STAMPING IS NOT PERMITTED. APPROVED DETECTABLE WARNING PRODUCTS ARE:
 - ARMORTILE/HERCULITE SERIES #33538 - YELLOW OR #22144 - BRICK RED) REPLACEABLE TILE - BY ENGINEERED PLASTICS, INC., 300 INTERNATIONAL DRIVE, SUITE 100, WILLIAMSVILLE, NY 14221.
 - COMPOSITE TACTILE WARNING PAVEMENT UNIT (CAST-IN-PLACE REPLACEABLE #33538 - YELLOW OR #20109 - BRICK RED) - BY ADA SOLUTIONS, INC. 323 ANDOVER ST. SUITE 3, WILMINGTON, MA 01887.
 - APPROVED EQUAL.
- DRAINAGE: ALL CURB RAMPS SHALL BE DESIGNED AND CONSTRUCTED TO PROVIDE POSITIVE DRAINAGE SO AS TO PREVENT PONDING. PARTICULAR ATTENTION IS TO BE GIVEN TO RAMPS LOCATED IN EITHER FLAT OR STEEP AREAS; AND CURB RAMP TYPES 2 & 4 THAT HAVE LANDINGS AT STREET LEVEL.
- MATERIAL: ALL CURB RAMPS SHALL BE CONSTRUCTED WITH FIBER REINFORCEMENT TO CONCRETE. PLACING AND FINISHING AND CURING SHALL CONFORM TO 456.03. THE FINAL SURFACE TEXTURE SHALL BE OBTAINED BY COARSE BROOMING OR OTHER METHOD APPROVED BY THE ENGINEER. THIS ITEM INCLUDES FURNISHING AND INSTALLING APPROVED DETECTABLE WARNINGS; UNLESS PAID FOR UNDER A SEPARATE ITEM. ALL CURB RAMPS SHALL CONFORM TO ALL REQUIREMENTS OF THE AMERICAN DISABILITIES ACT (ADA). SYNTHETIC MACRO FIBER REINFORCEMENT SHALL BE ADDED TO CLASS C CONCRETE USED FOR THE PURPOSE OF CONTROLLING TEMPERATURE AND DRYING SHRINKAGE CRACKING. FIBERS SHALL PROVIDE A MINIMUM POST-CRACK RESIDUAL STRENGTH CAPACITY OF 250 PSIAS MEASURED BY ASTM C1399 AND SHALL MEET THE REQUIREMENTS OF ASTM C 1116 FOR TYPE III SYNTHETIC FIBERS. FIBERS SHALL BE 100 PERCENT VIRGIN POLYPROPYLENE FIBRILLATED FIBERS CONTAINING NO REPROCESSED OLEFIN MATERIALS AND SPECIFICALLY MANUFACTURED TO AN OPTIMUM GRADATION FOR USE AS CONCRETE SECONDARY REINFORCEMENT. FIBERS SHALL HAVE A SPECIFIC GRAVITY: 0.91, TENSILE STRENGTH: 70,000 TO 110,000 POUNDS PER SQUARE INCH IN ACCORDANCE WITH ASTM D2296. FIBER LENGTH: 1-1/2 INCH MINIMUM, AND ASPECT RATIO: 0.7 MINIMUM. VOLUME OF FIBERS SHALL BE AS RECOMMENDED BY THE FIBER MANUFACTURER, OR MINIMUM 4 LBS./CY.
- ALL COST ASSOCIATED WITH ADDING FIBER REINFORCING, PLACING, AND FINISHING, IN THE RAMP AREA IS TO BE INCLUDED IN THE COST OF THE CURB RAMP.

DRIVEWAYS:

- DRIVEWAY LOCATIONS ARE GOVERNED BY CITY OF AKRON ORDINANCES.
- THE SIDEWALK WIDTH AT TOP OF DRIVE SHALL BE PREFERRED WIDTH OF 48"; FOR ALTERATIONS TO EXISTING RIGHT-OF-WAY WHERE THE PREFERRED WIDTH CANNOT BE MET, THE MINIMUM WIDTH SHALL BE 36".
- LIP AT BOTTOM OF APRON SHALL BE ONE INCH TYPICAL.

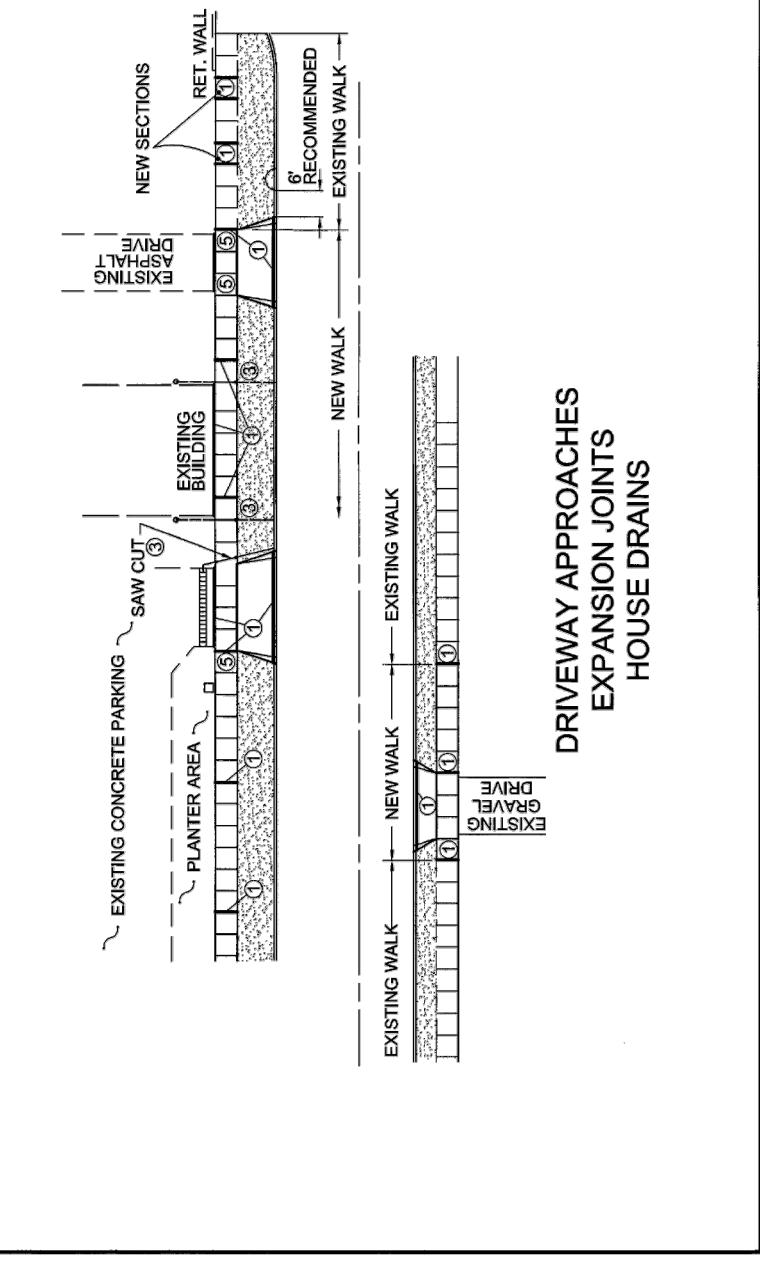
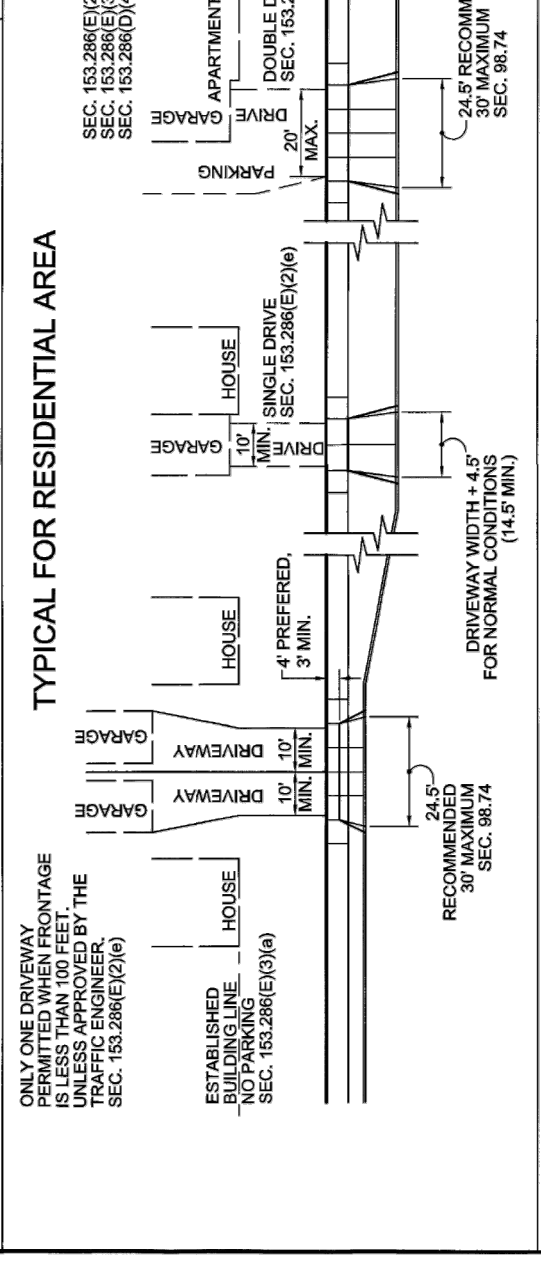
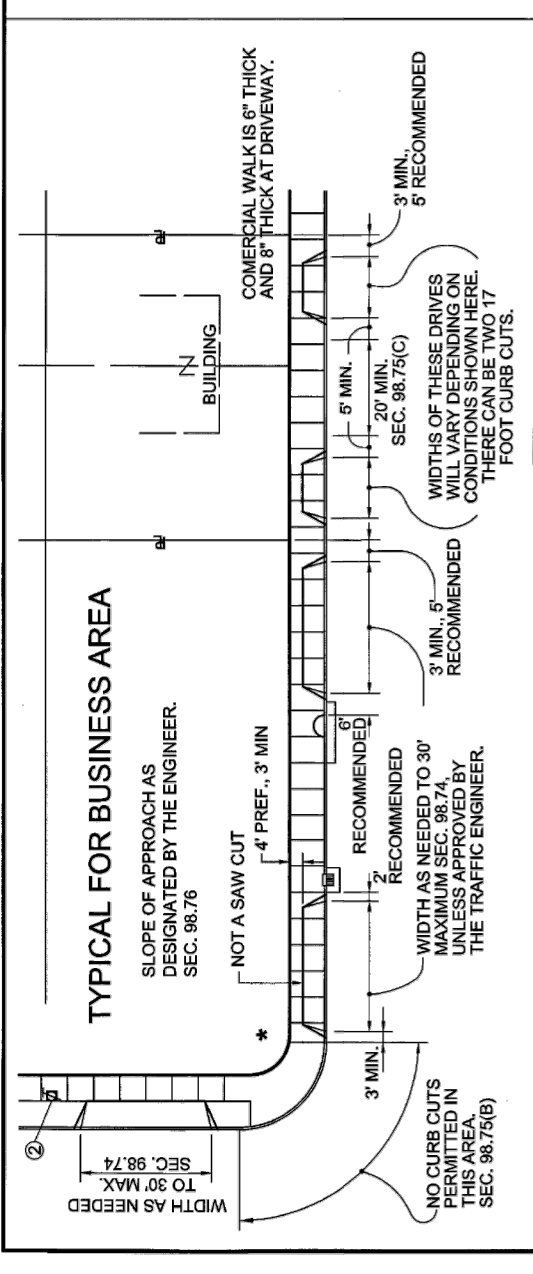
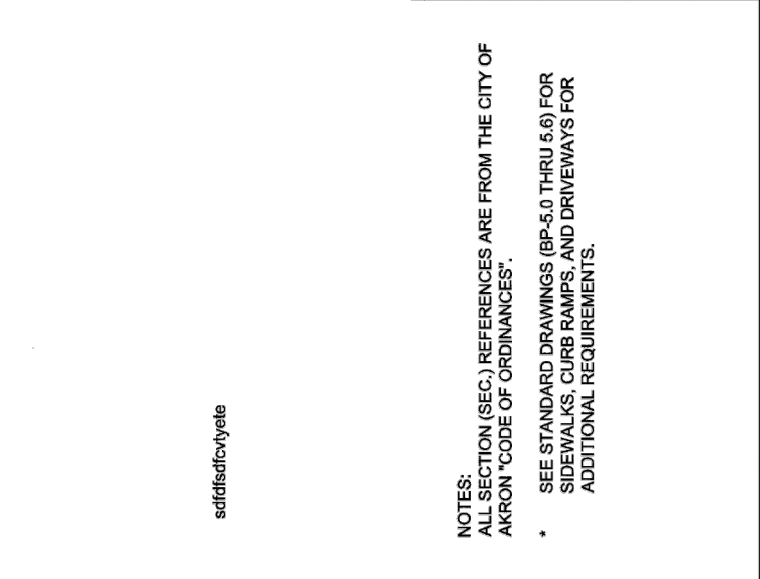
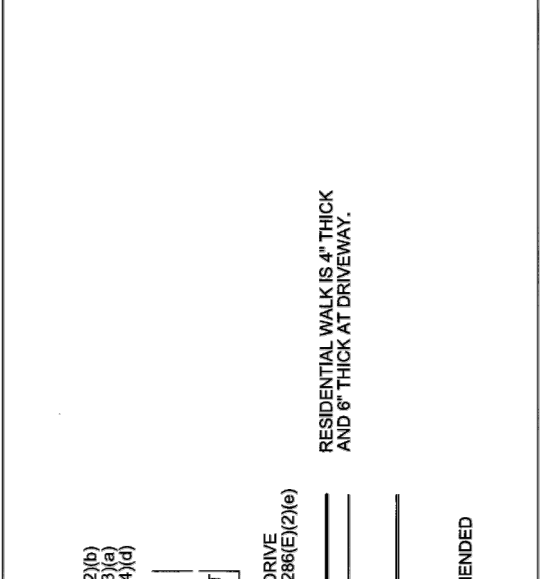
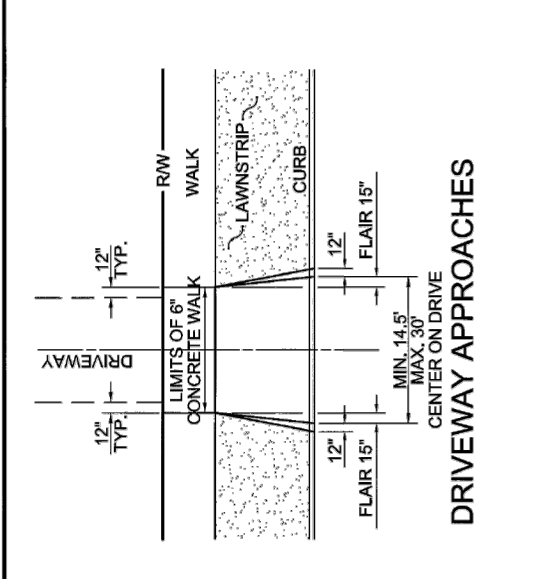
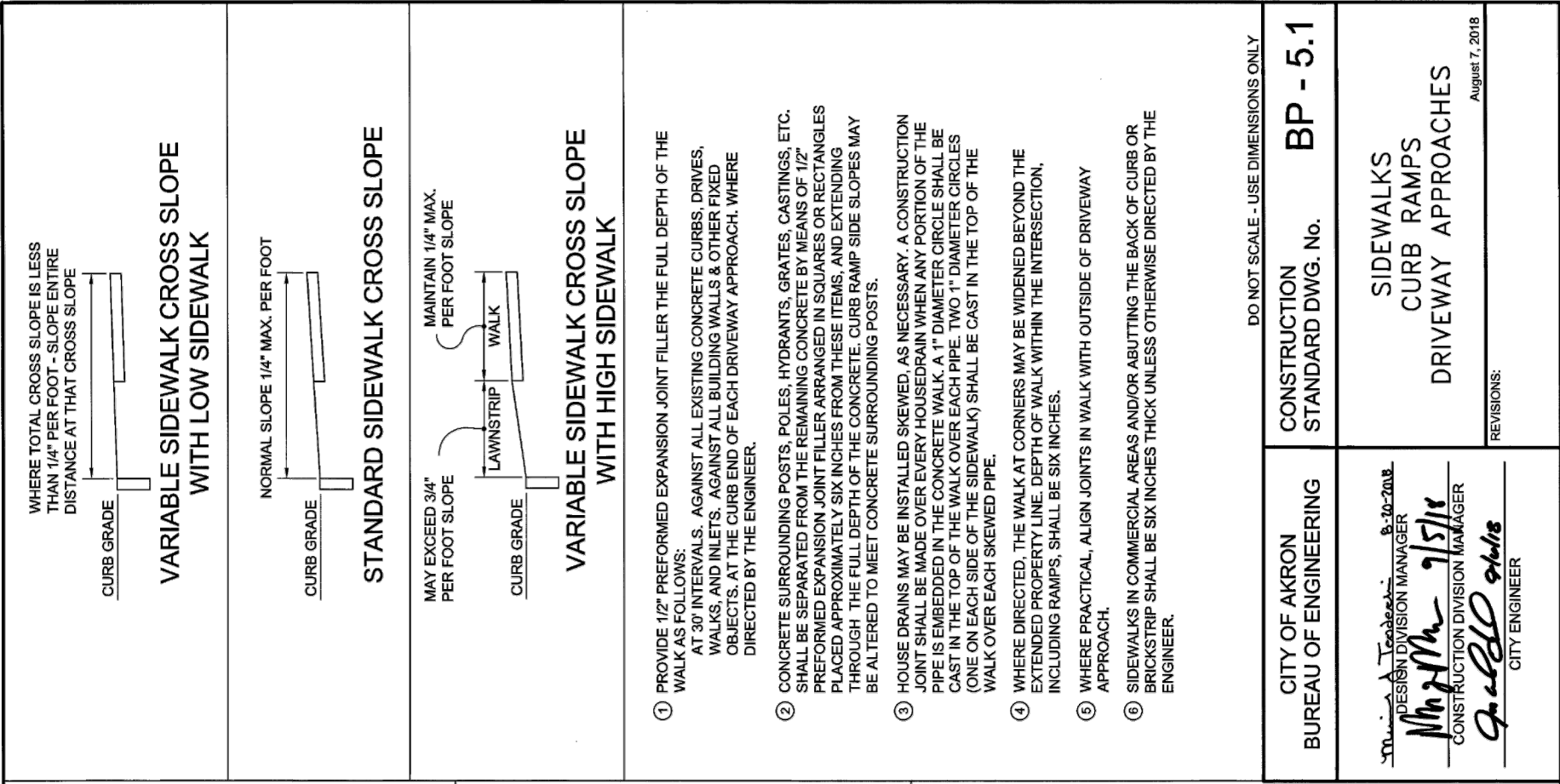
DO NOT SCALE - USE DIMENSIONS ONLY

CITY OF AKRON BUREAU OF ENGINEERING	CONSTRUCTION STANDARD DWG. No.	BP - 5.0
 DESIGN DIVISION MANAGER 9-14-20	SIDEWALKS, CURB RAMPS, AND DRIVEWAY APPROACHES	
 CONSTRUCTION DIVISION MANAGER 9/22/20	REVISIONS: September 10, 2020	



BUILDER:	OWNER:	REVISIONS:	PROJECT #	PROJECT NAME:	
Habitat for Humanity of Summit County 2301 Romig Road Akron, OH 44320	Habitat for Humanity of Summit County 2301 Romig Road Akron, OH 4432		3107-0007	VERNON ODOM BLVD & SUPERIOR AVE	
			DATE	SHEET NUMBER:	TOTAL SHEETS:
			2025-12-23		

SIDEWALKS, CURB RAMPS, DRIVEWAY APPROACHES



- ① PROVIDE 1/2" PREFORMED EXPANSION JOINT FILLER THE FULL DEPTH OF THE WALK AS FOLLOWS:
AT 30' INTERVALS. AGAINST ALL EXISTING CONCRETE CURBS, DRIVES, WALKS, AND INLETS. AGAINST ALL BUILDING WALLS & OTHER FIXED OBJECTS. AT THE CURB END OF EACH DRIVEWAY APPROACH. WHERE DIRECTED BY THE ENGINEER.
- ② CONCRETE SURROUNDING POSTS, POLES, HYDRANTS, GRATES, CASTINGS, ETC. SHALL BE SEPARATED FROM THE REMAINING CONCRETE BY MEANS OF 1/2" PREFORMED EXPANSION JOINT FILLER ARRANGED IN SQUARES OR RECTANGLES PLACED APPROXIMATELY SIX INCHES FROM THESE ITEMS, AND EXTENDING THROUGH THE FULL DEPTH OF THE CONCRETE. CURB RAMP SIDE SLOPES MAY BE ALTERED TO MEET CONCRETE SURROUNDING POSTS.
- ③ HOUSE DRAINS MAY BE INSTALLED SKEWED, AS NECESSARY. A CONSTRUCTION JOINT SHALL BE MADE OVER EVERY HOUSE DRAIN WHEN ANY PORTION OF THE PIPE IS EMBEDDED IN THE CONCRETE WALK. A 1" DIAMETER CIRCLE SHALL BE CAST IN THE TOP OF THE WALK OVER EACH PIPE. TWO 1" DIAMETER CIRCLES (ONE ON EACH SIDE OF THE SIDEWALK) SHALL BE CAST IN THE TOP OF THE WALK OVER EACH SKEWED PIPE.
- ④ WHERE DIRECTED, THE WALK AT CORNERS MAY BE WIDENED BEYOND THE EXTENDED PROPERTY LINE. DEPTH OF WALK WITHIN THE INTERSECTION, INCLUDING RAMPS, SHALL BE SIX INCHES.
- ⑤ WHERE PRACTICAL, ALIGN JOINTS IN WALK WITH OUTSIDE OF DRIVEWAY APPROACH.
- ⑥ SIDEWALKS IN COMMERCIAL AREAS AND/OR ABUTTING THE BACK OF CURB OR BRICKSTRIP SHALL BE SIX INCHES THICK UNLESS OTHERWISE DIRECTED BY THE ENGINEER.

DO NOT SCALE - USE DIMENSIONS ONLY	
CITY OF AKRON BUREAU OF ENGINEERING	CONSTRUCTION STANDARD DWG. No. BP - 5.1
 DESIGN DIVISION MANAGER CONSTRUCTION DIVISION MANAGER CITY ENGINEER	SIDEWALKS CURB RAMPS DRIVEWAY APPROACHES August 7, 2018 REVISIONS:

DAVEY Resource Group
1310 SHARON COPLEY ROAD, P.O. BOX 37
SHARON-CENTER, OHIO 44274
(PHONE) 330.590.8004 (FAX) 888.820.8423

BUILDER:
Habitat for Humanity
of Summit County
2301 Romig Road
Akron, OH 44320

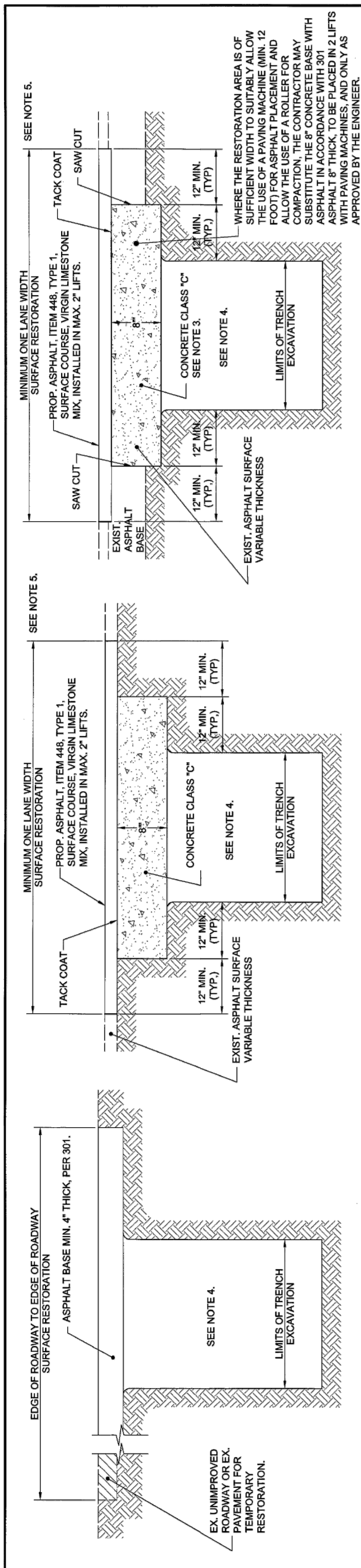
OWNER:
Habitat for Humanity
of Summit County
2301 Romig Road
Akron, OH 44320

REVISIONS:

PROJECT #
3107-0007
DATE
2025-12-23

PROJECT NAME:
VERNON ODOM BLVD &
SUPERIOR AVE
SHEET NUMBER:
TOTAL SHEETS:

BP-6 PAVEMENT RESTORATION

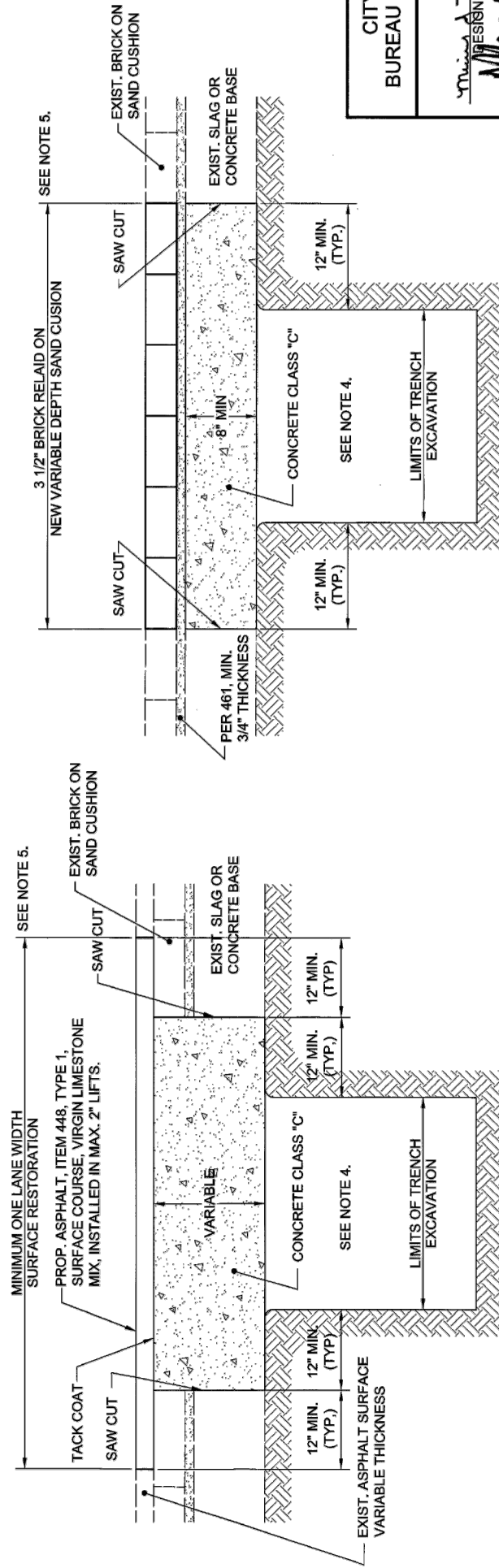


UNIMPROVED ROADWAY AND
TEMPORARY PAVEMENT
RESTORATION DETAIL
DETAIL NO. 1

ASPHALT SURFACE
RESTORATION DETAIL
DETAIL NO. 2

ASPHALT PAVEMENT
RESTORATION DETAIL
DETAIL NO. 3

WHERE THE RESTORATION AREA IS OF SUFFICIENT WIDTH TO SUITABLY ALLOW THE USE OF A PAVING MACHINE (MIN. 12 FOOT) FOR ASPHALT PLACEMENT AND ALLOW THE USE OF A ROLLER FOR COMPACTION, THE CONTRACTOR MAY SUBSTITUTE THE 8" CONCRETE BASE WITH ASPHALT IN ACCORDANCE WITH 301 ASPHALT 8" THICK, TO BE PLACED IN 2 LIFTS WITH PAVING MACHINES, AND ONLY AS APPROVED BY THE ENGINEER.




RESURFACED BRICK PAVEMENT
RESTORATION DETAIL
DETAIL NO. 4

EXPOSED BRICK PAVEMENT
RESTORATION DETAIL
DETAIL NO. 5

- NOTES:**
1. THE COST OF ALL RESTORATION SHALL BE INCLUDED IN THE PRICE BID FOR THE ITEM WHICH MADE NECESSARY THE RESTORATION, IN ACCORDANCE WITH 551.10 AND 104.07 UNLESS OTHERWISE PROVIDED FOR BY THE PLANS OR SPECIFICATIONS.
 2. IF THE TRENCH WIDTH ENCOMPASSES TWO TRAVELED LANES THEN BOTH LANE SURFACES SHALL BE RESTORED.
 3. THE TOP OF THE NEW CONCRETE BASE SHALL NOT BE CONSTRUCTED HIGHER THAN THE EXISTING BASE.
 4. BACKFILL MEETING THE REQUIREMENTS OF 551.09.
 5. LIMITS MAY BEGIN AT FACE OF CURB OR EDGE OF CURB AND GUTTER.
 6. WHEN A TRENCH CROSSES THE ROADWAY PERPENDICULARLY, THE PAVEMENT BASE SHALL EXTEND A MINIMUM OF 12" OUTSIDE OF THE TRENCH LIMITS AND THE ASPHALT SURFACE SHALL EXTEND A MINIMUM OF 12" OUTSIDE OF THE PAVEMENT BASE LIMITS.
 7. ARTERIAL AND COLLECTOR STREETS MAY REQUIRE THICKER BASE COURSE OF 10" TO 12"

DO NOT SCALE - USE DIMENSIONS ONLY

CITY OF AKRON BUREAU OF ENGINEERING	CONSTRUCTION STANDARD DWG. No.	BP - 6
 DESIGN DIVISION MANAGER CONSTRUCTION DIVISION MANAGER CITY ENGINEER		PAVEMENT RESTORATION
REVISIONS: August 7, 2018		

DAVEY Resource Group
 1310 SHARON COPLEY ROAD, P.O. BOX 37
 SHARON-CENTER, OHIO 44274
 (PHONE) 330.590.8004 (FAX) 888.820.8423

BUILDER:
 Habitat for Humanity
 of Summit County
 2301 Romig Road
 Akron, OH 44320

OWNER:
 Habitat for Humanity
 of Summit County
 2301 Romig Road
 Akron, OH 44320

REVISIONS:

PROJECT #
 3107-0007

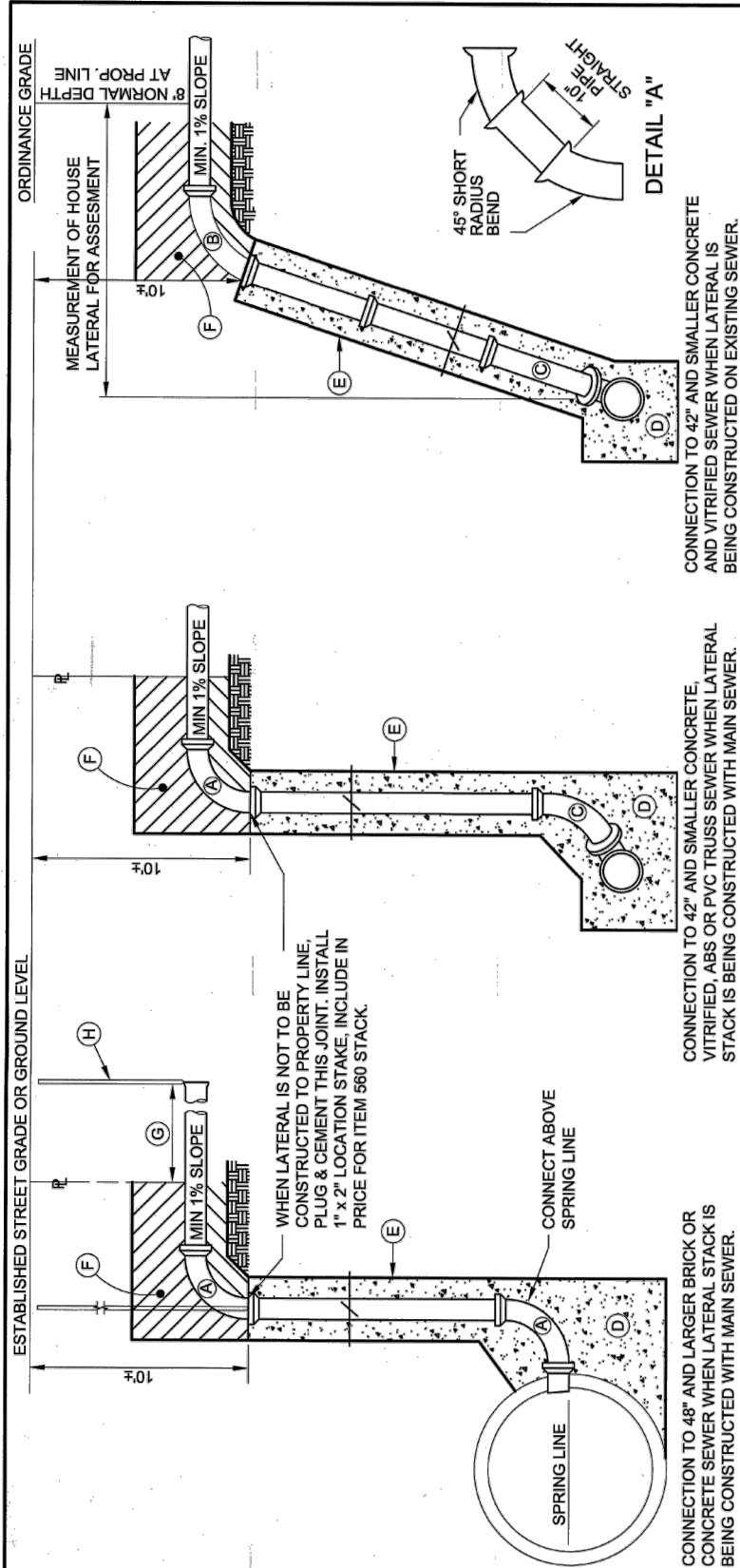
DATE
 2025-12-23

PROJECT NAME:
 VERNON ODOM BLVD &
 SUPERIOR AVE

SHEET NUMBER:

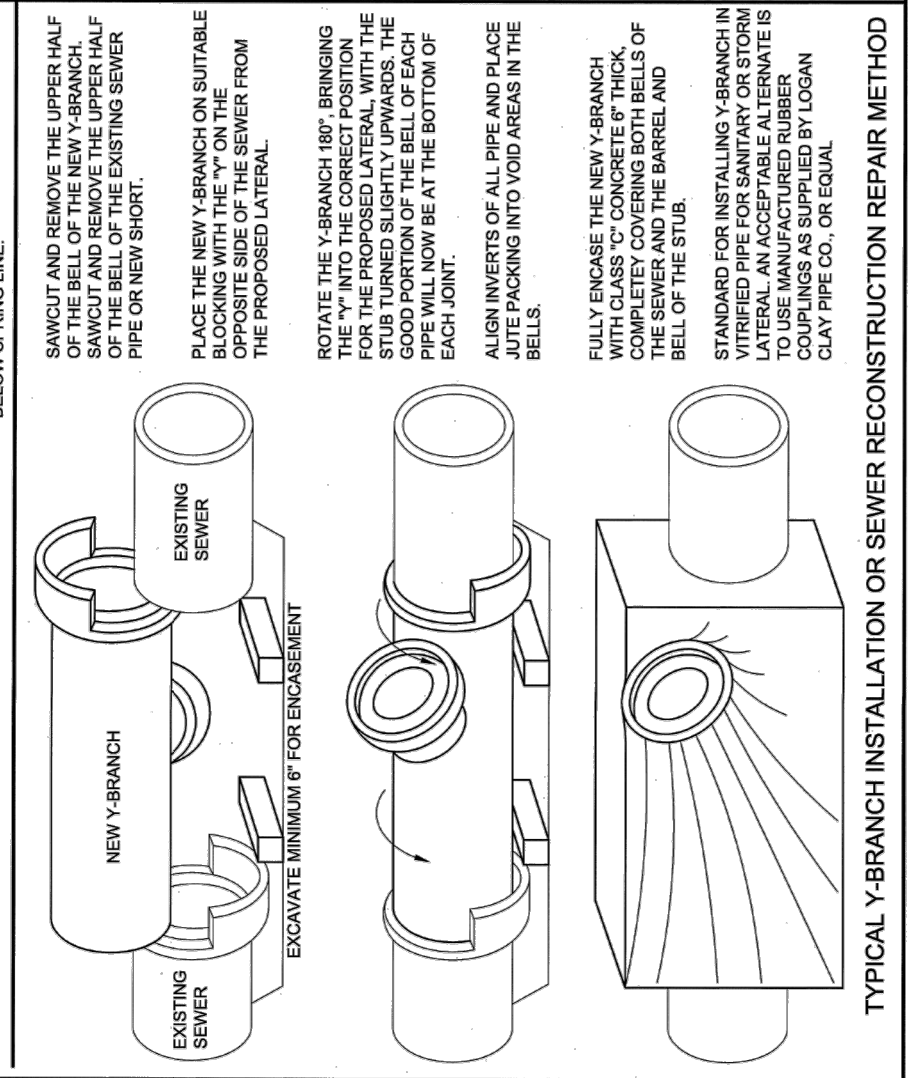
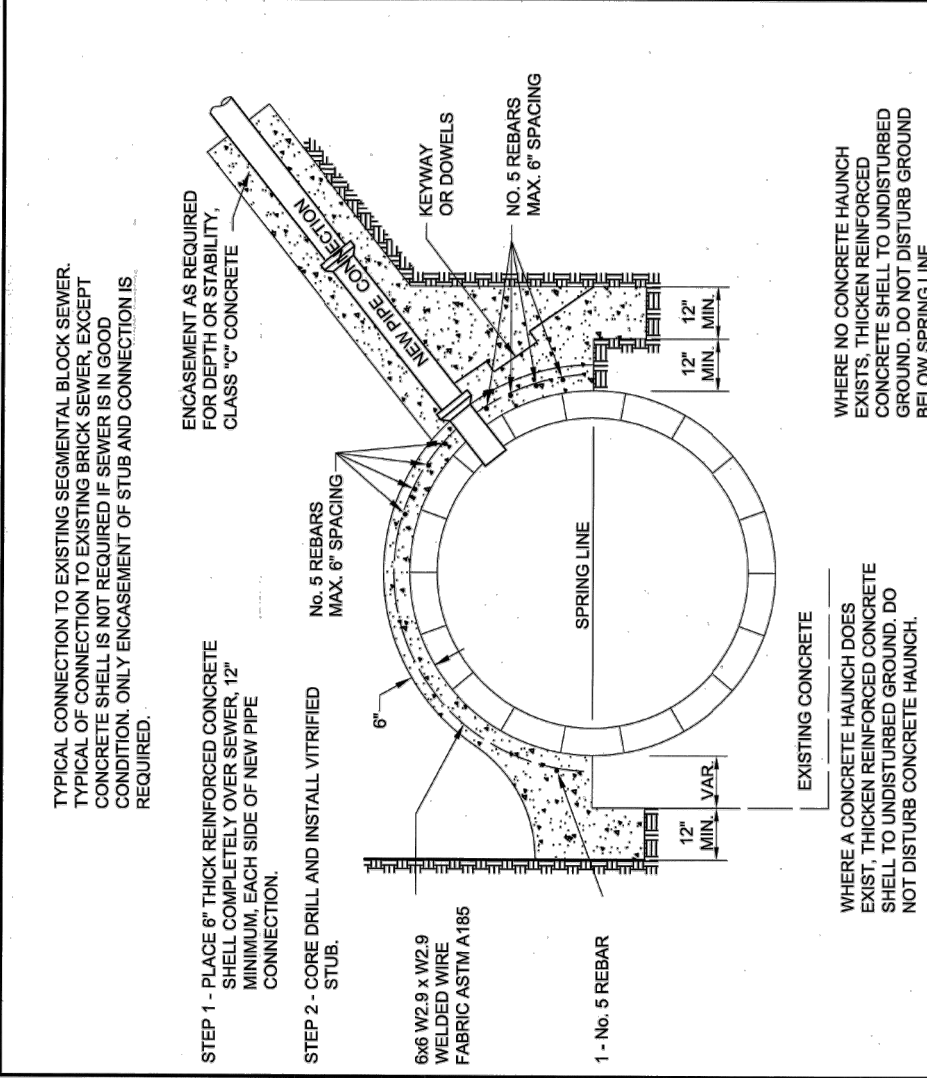
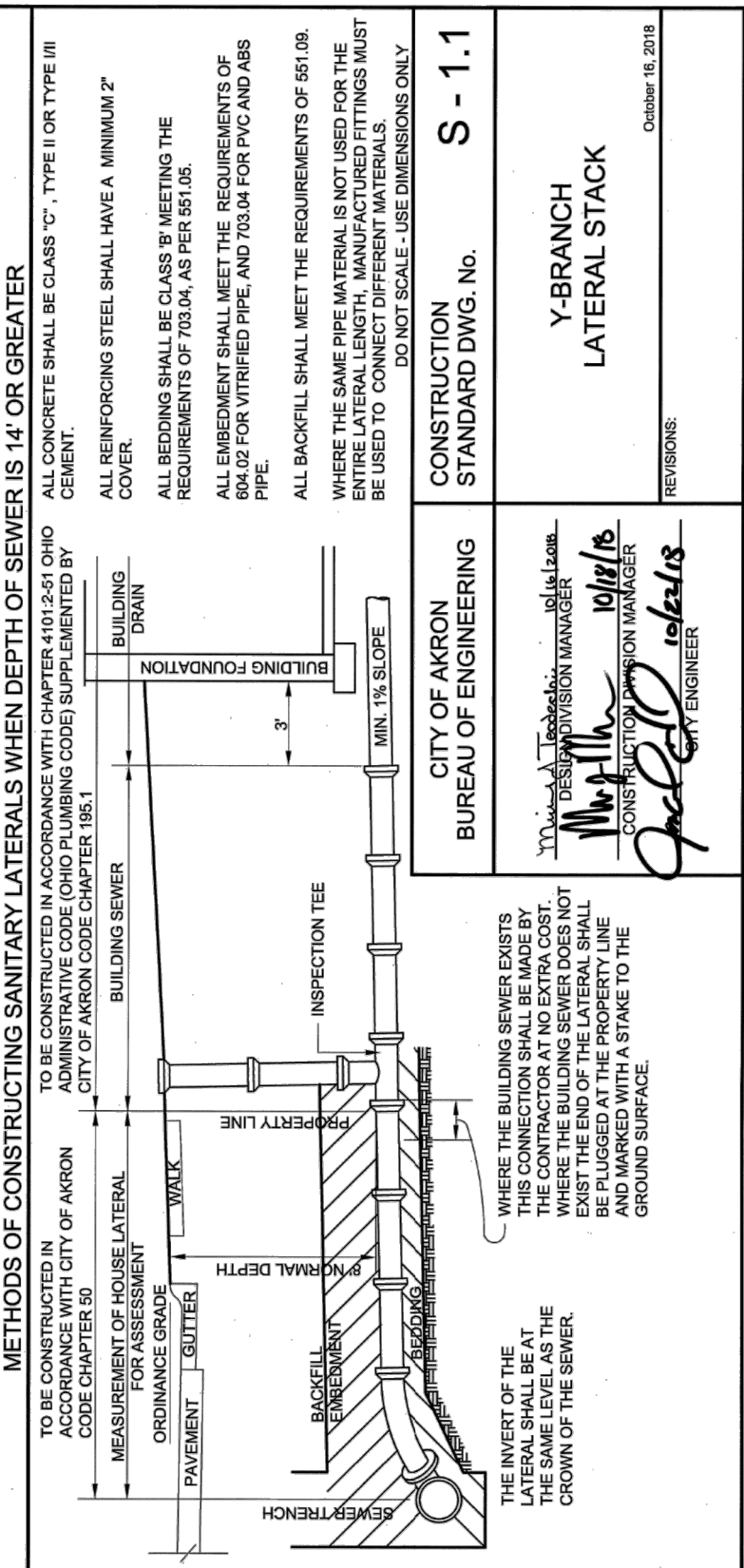
TOTAL SHEETS:

S-1.1 Y-BRANCH LATERAL STACK



NOTE:
SONOTUBES MAY BE USED TO FORM CONCRETE ENCASUREMENT PROVIDED THE MINIMUM 6" THICKNESS IS MAINTAINED. CLASS "C" CONCRETE ENCASUREMENT SHOULD BE STOPPED ONLY AT BELLS. STACKS SHALL BE CONSTRUCTED TO WITHIN 10% OF ESTABLISHED STREET GRADE OR GROUND LEVEL. ENCASUREMENT SHALL BE INCLUDED IN THE PRICE BID FOR ITEM 560 STACK, WHEN NOT CONSTRUCTED TO PROPERTY LINE OR ITEM 560 HOUSE LATERAL, WHEN CONSTRUCTED TO PROPERTY LINE.

	VCP	PVC OR ABS
A	90° LONG RADIUS BEND	90° LONG RADIUS BEND OR AS PER DETAIL A
B	45° LONG RADIUS BEND	45° LONG OR SHORT RADIUS BEND
C	LONG RADIUS BEND	LONG RADIUS OR SHORT RADIUS BENDS NOT TO EXCEED 45°
D	CONCRETE ENCASUREMENT (MIN. 6" THICKNESS)	#67 STONE ENCASUREMENT, MINIMUM 6" THICKNESS
E	SONOTUBE (OPTIONAL) INCLUDE IN COST OF 560 STACK	SONOTUBE (REQUIRED) INCLUDE IN COST OF 560 STACK
F	BEDDING IN ACCORDANCE WITH 851.05, INCLUDED IN COST OF 560 STACK.	
G	MINIMUM 3' LENGTH BEHIND PROPERTY LINE	
H	WHEN LATERAL IS NOT TO BE CONNECTED TO AN EXISTING LATERAL, FINISH WITH A BELL END, USE A REMOVABLE PLUG IN THE END, AND INSTALL A 1" x 2" LOCATION STAKE, INCLUDE IN THE COST OF ITEM 560 STACK.	



CONSTRUCTION STANDARD DWG. No. S-1.1

CITY OF AKRON BUREAU OF ENGINEERING

DESIGN DIVISION MANAGER
10/16/18

CONSTRUCTION DIVISION MANAGER
10/22/18

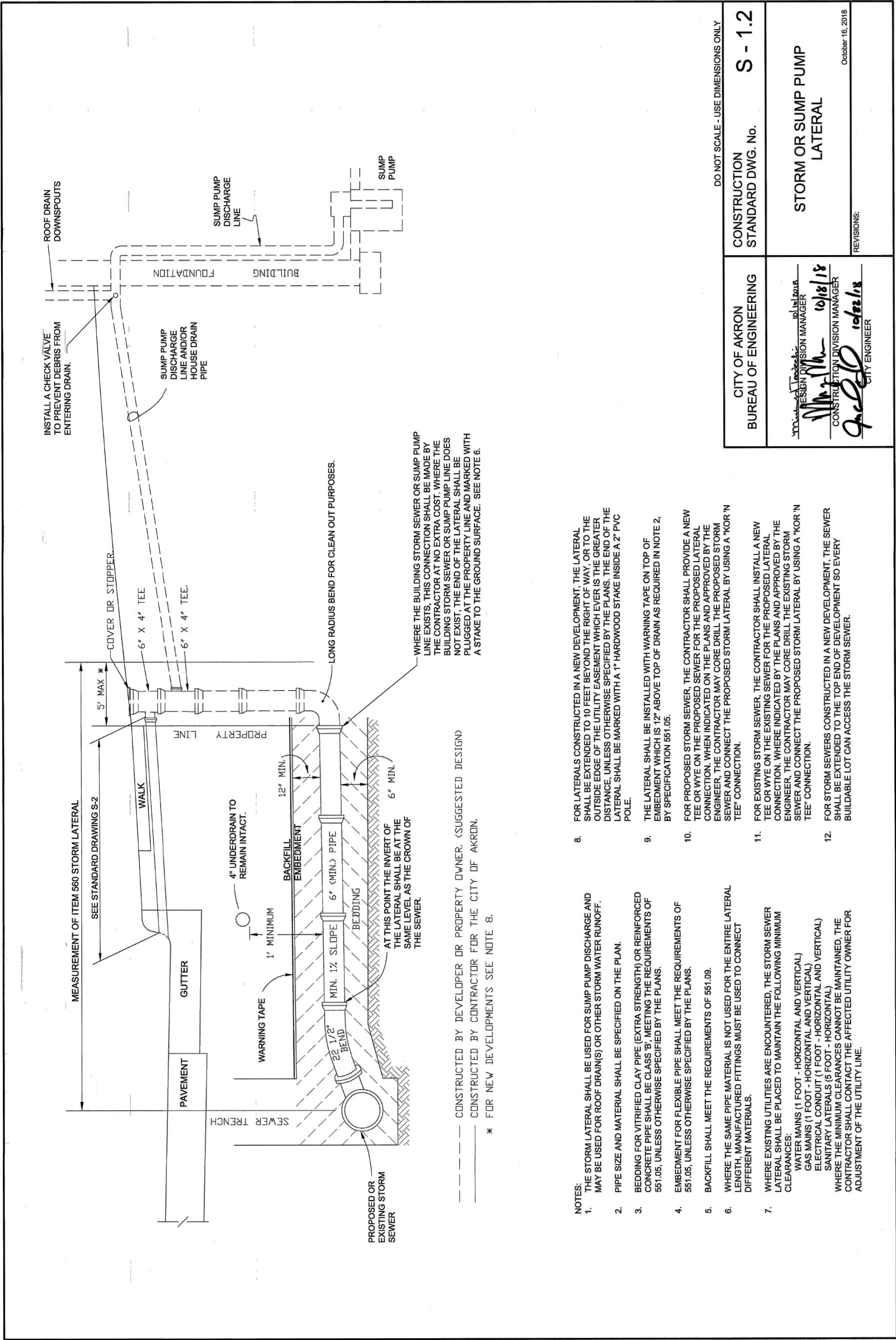
CITY ENGINEER

Y-BRANCH LATERAL STACK

October 16, 2018

<p>Davey Resource Group 1310 SHARON COPLEY ROAD, P.O. BOX 37 SHARON-CENTER, OHIO 44274 (PHONE) 330.590.8004 (FAX) 888.820.8423</p>	BUILDER:	OWNER:	REVISIONS:	PROJECT #	PROJECT NAME:	
	Habitat for Humanity of Summit County 2301 Romig Road Akron, OH 44320	Habitat for Humanity of Summit County 2301 Romig Road Akron, OH 44320		3107-0007	VERNON ODOM BLVD & SUPERIOR AVE	
				DATE	SHEET NUMBER:	TOTAL SHEETS:
			2025-12-23			

S-1.2 STORM OR SUMP PUMP LATERAL



- NOTES:**
- THE STORM LATERAL SHALL BE USED FOR SUMP PUMP DISCHARGE AND MAY BE USED FOR ROOF DRAIN(S) OR OTHER STORM WATER RUNOFF.
 - PIPE SIZE AND MATERIAL SHALL BE SPECIFIED ON THE PLAN.
 - BEDDING FOR VITRIFIED CLAY PIPE (EXTRA STRENGTH) OR REINFORCED CONCRETE PIPE SHALL BE CLASS 'B', MEETING THE REQUIREMENTS OF 551.05, UNLESS OTHERWISE SPECIFIED BY THE PLANS.
 - EMBEDMENT FOR FLEXIBLE PIPE SHALL MEET THE REQUIREMENTS OF 551.05, UNLESS OTHERWISE SPECIFIED BY THE PLANS.
 - BACKFILL SHALL MEET THE REQUIREMENTS OF 551.09.
 - WHERE THE SAME PIPE MATERIAL IS NOT USED FOR THE ENTIRE LATERAL LENGTH, MANUFACTURED FITTINGS MUST BE USED TO CONNECT DIFFERENT MATERIALS.
 - WHERE EXISTING UTILITIES ARE ENCOUNTERED, THE STORM SEWER LATERAL SHALL BE PLACED TO MAINTAIN THE FOLLOWING MINIMUM CLEARANCES:
 WATER MAINS (1 FOOT - HORIZONTAL AND VERTICAL)
 GAS MAINS (1 FOOT - HORIZONTAL AND VERTICAL)
 ELECTRICAL CONDUIT (1 FOOT - HORIZONTAL AND VERTICAL)
 SANITARY LATERALS (5 FOOT - HORIZONTAL)
 WHERE THE MINIMUM CLEARANCES CANNOT BE MAINTAINED, THE CONTRACTOR SHALL CONTACT THE AFFECTED UTILITY OWNER FOR ADJUSTMENT OF THE UTILITY LINE.
 - FOR LATERALS CONSTRUCTED IN A NEW DEVELOPMENT, THE LATERAL SHALL BE EXTENDED TO 10 FEET BEYOND THE RIGHT OF WAY, OR TO THE OUTSIDE EDGE OF THE UTILITY EASEMENT WHICH EVER IS THE GREATER DISTANCE, UNLESS OTHERWISE SPECIFIED BY THE PLANS. THE END OF THE LATERAL SHALL BE MARKED WITH A 1" HARDWOOD STAKE INSIDE A 2" PVC POLE.
 - THE LATERAL SHALL BE INSTALLED WITH WARNING TAPE ON TOP OF EMBEDMENT WHICH IS 12" ABOVE TOP OF DRAIN AS REQUIRED IN NOTE 2, BY SPECIFICATION 551.05.
 - FOR PROPOSED STORM SEWER, THE CONTRACTOR SHALL PROVIDE A NEW TEE OR WYE ON THE PROPOSED SEWER FOR THE PROPOSED LATERAL CONNECTION. WHEN INDICATED ON THE PLANS AND APPROVED BY THE ENGINEER, THE CONTRACTOR MAY CORE DRILL THE PROPOSED STORM SEWER AND CONNECT THE PROPOSED STORM LATERAL BY USING A "KOR 'N TEE" CONNECTION.
 - FOR EXISTING STORM SEWER, THE CONTRACTOR SHALL INSTALL A NEW TEE OR WYE ON THE EXISTING SEWER FOR THE PROPOSED LATERAL CONNECTION. WHERE INDICATED BY THE PLANS AND APPROVED BY THE ENGINEER, THE CONTRACTOR MAY CORE DRILL THE EXISTING STORM SEWER AND CONNECT THE PROPOSED STORM LATERAL BY USING A "KOR 'N TEE" CONNECTION.
 - FOR STORM SEWERS CONSTRUCTED IN A NEW DEVELOPMENT, THE SEWER SHALL BE EXTENDED TO THE TOP END OF DEVELOPMENT SO EVERY BUILDABLE LOT CAN ACCESS THE STORM SEWER.

--- CONSTRUCTED BY DEVELOPER OR PROPERTY OWNER. (SUGGESTED DESIGN)
 - - - CONSTRUCTED BY CONTRACTOR FOR THE CITY OF AKRON.
 * FOR NEW DEVELOPMENTS SEE NOTE 8.

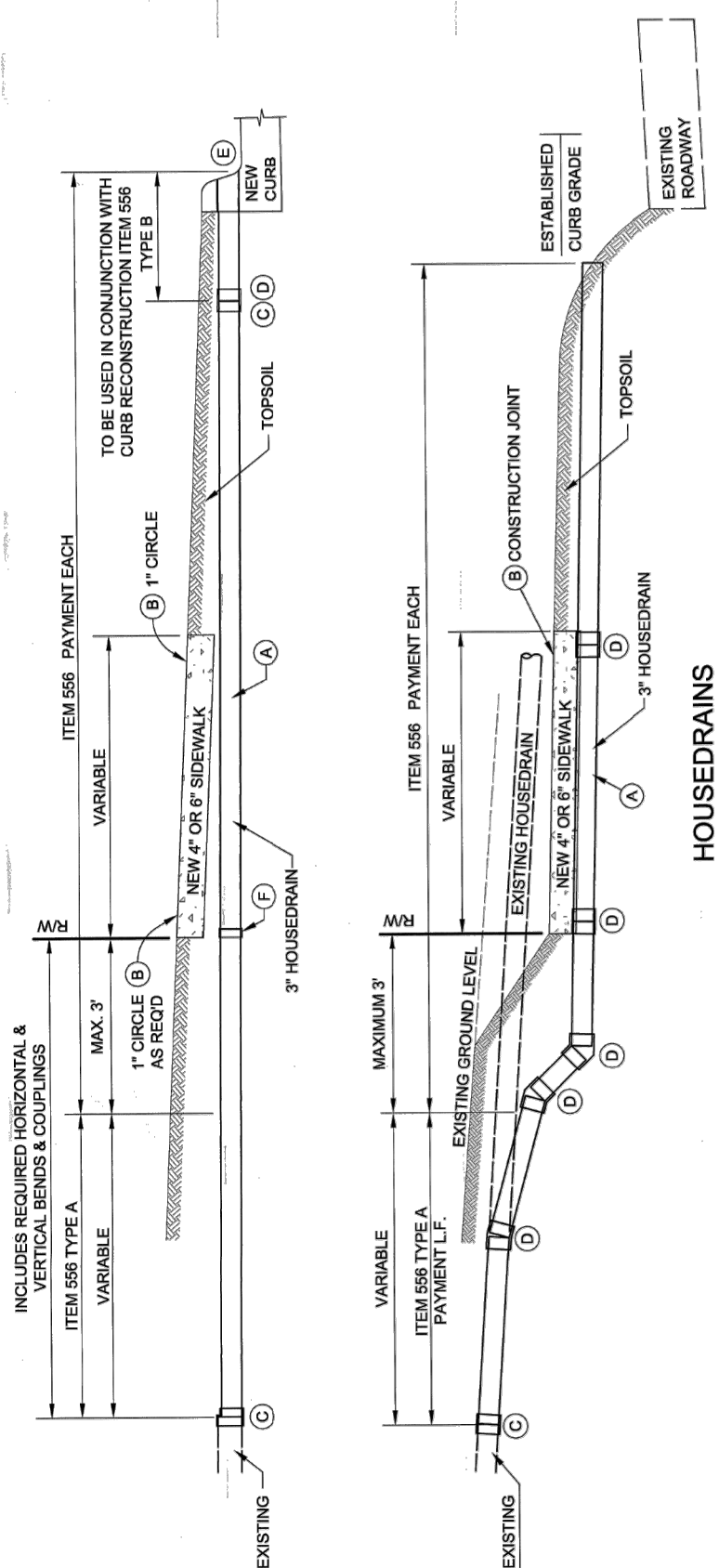
CITY OF AKRON BUREAU OF ENGINEERING	DO NOT SCALE - USE DIMENSIONS ONLY CONSTRUCTION STANDARD DWG. No. S-1.2
 DESIGN DIVISION MANAGER 10/18/18	STORM OR SUMP PUMP LATERAL
 CONSTRUCTION DIVISION MANAGER 10/18/18	REVISIONS: October 16, 2018

	Davey Resource Group 1310 SHARON COPLEY ROAD, P.O. BOX 37 SHARON-CENTER, OHIO 44274 (PHONE) 330.590.8004 (FAX) 888.820.8423	BUILDER: Habitat for Humanity of Summit County 2301 Romig Road Akron, OH 44320	OWNER: Habitat for Humanity of Summit County 2301 Romig Road Akron, OH 44320	REVISIONS:	PROJECT # 3107-0007	PROJECT NAME: VERNON ODOM BLVD & SUPERIOR AVE		
						DATE 2025-12-23	SHEET NUMBER: S-1.2	TOTAL SHEETS:

HOUSE DRAINS TRENCH DRAINS

HOUSEDRAINS

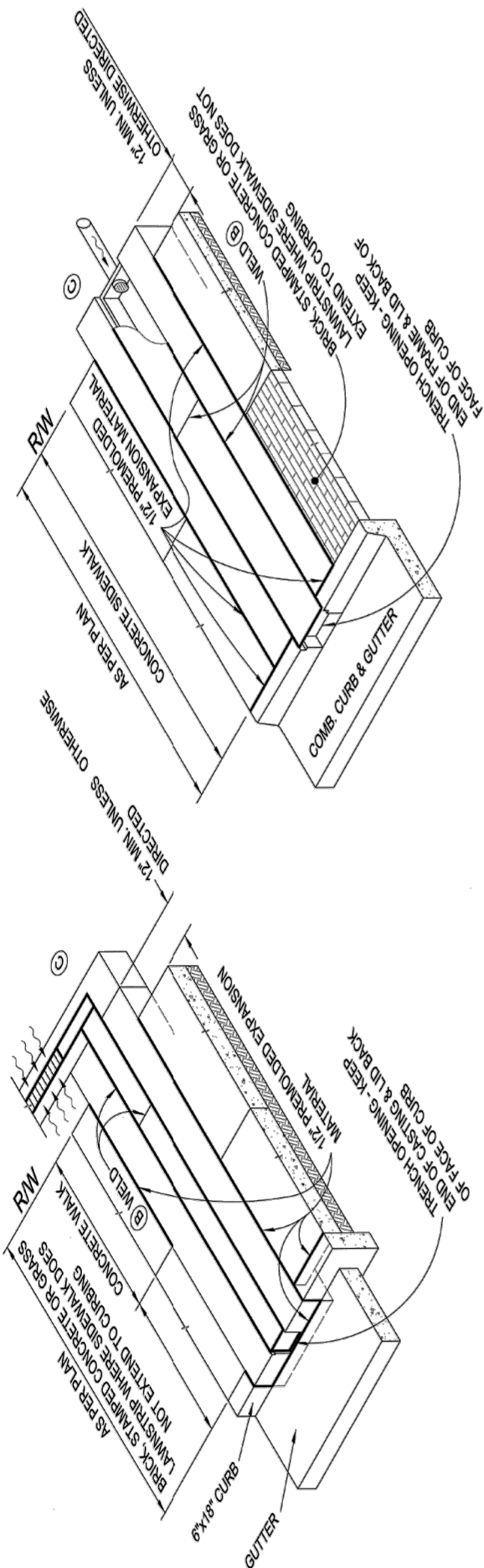
- (A) HOUSEDRAINS MUST BE LAID ON UNDISTURBED OR COMPACTED GROUND ON A CONTINUOUS SLOPE FROM R/W TO CURB. CAUTION SHALL BE EXERCISED TO PREVENT THE PIPE FROM SAGGING OR BEING CRUSHED UNDER THE CONCRETE.
- (B) WHERE HOUSEDRAINS CROSS UNDER WALKS, THE WALK SHALL BE MARKED WITH A 1" DIAMETER CIRCLE ON THE FRONT EDGE OVER THE PIPE. WHERE THE PIPE IS SKEWED 5° OR MORE BOTH EDGES OF THE WALK SHALL BE MARKED WITH A CIRCLE. WHERE ANY PORTION OF THE PIPE IS EMBEDDED IN THE CONCRETE, A CONSTRUCTION JOINT SHALL BE SAWCUT 2" INTO THE WALK DIRECTLY OVER THE PIPE.
- (C) CONNECTIONS TO EXISTING DRAIN PIPES SHALL INCLUDE ALL SUITABLE FITTINGS AND JOINTING AS NECESSARY.
- (D) COUPLINGS SHALL BE PROVIDED AS SHOWN. BELL END PIPE MAY BE USED IN LIEU OF COUPLINGS, AS DIRECTED BY THE ENGINEER.
- (E) HOLES SIZED COMPATIBLY TO THE PIPE SHALL BE PROVIDED THROUGH THE FINISHED CURB ONLY BY DRILLING. KEEP PIPE RECESSED 1/2".
- (F) PIPE SHALL TERMINATE WITH BELL OR COUPLING (PLUGGED) WHEN THERE IS NO EXISTING HOUSEDRAIN TO CONNECT.



HOUSEDRAINS

COVERED TRENCH DRAINS

- (A) THESE DRAWINGS SHOW TYPICAL METHODS OF CONSTRUCTING COVERED TRENCH DRAINS IN THE SIDEWALK AND LAWNSTRIP AREAS. SEVERAL MANUFACTURERS SUPPLY THE METAL TROUGHS, COVERS, ANGLE IRON, ETC., AND SLIGHT VARIATIONS IN DIMENSIONS OF THESE ITEMS MAY BE APPROVED BY THE ENGINEER.
- (B) COVERS SHALL BE FIELD WELDED TO THE FRAME ALONG EACH TOP EDGE AT INTERVALS NOT EXCEEDING 12". THE WELD SHALL BE 1" IN LENGTH. IF THE COVER IS COMPRISED OF TWO OR MORE PIECES, THE PIECES SHALL BE JOINED TOGETHER WITH A CONTINUOUS BUTT WELD. COVERS SHALL HAVE A NON-SLIP FINISH. OPEN TYPE GRATING WILL NOT BE PERMITTED.
- (C) COVERED TRENCHES MAY BE USED IN CONJUNCTION WITH DRIVEWAY TRENCH DRAINS OR LARGER ROOF DRAIN PIPES, OR AS APPROVED BY THE ENGINEER.



ALL METAL TROUGH IN CONCRETE

CONCRETE TROUGH WITH METAL COVER

DO NOT SCALE - USE DIMENSIONS ONLY

S - 2

CONSTRUCTION STANDARD DWG. No.

CITY OF AKRON
BUREAU OF ENGINEERING

HOUSE DRAINS
TRENCH DRAINS

October 16, 2018

REVISIONS:

DESIGN DIVISION MANAGER
CONSTRUCTION DIVISION MANAGER
CITY ENGINEER

WATER SERVICE AND FIRELINE NOTES

WATER SERVICE AND FIRELINE NOTES

NO WATER SERVICE WILL BE INSTALLED UNTIL ALL REQUIREMENTS OF THE AKRON WATER SUPPLY BUREAU (AWSB) ARE MET, INCLUDING BUT NOT LIMITED TO THE FOLLOWING:

1. REVIEW AND APPROVAL OF ALL BUILDING PLANS.
2. RECEIPT OF THE APPLICABLE FEES.
3. APPROVAL OF THE HOUSELINE INSTALLATION AND APPURTENANCES.
4. APPROVAL OF THE FIRE SYSTEM WHICH INCLUDES REVIEW AND APPROVAL OF SPRINKLER PLANS.

ALL ON-SITE WATER LINE PIPING AND APPURTENANCES SHALL BE INSTALLED ACCORDING TO AWSB SPECIFICATIONS AND MUST BE INSPECTED AND APPROVED BY THE AWSB (330-375-2420) PRIOR TO BACKFILLING.

ALL UNDERGROUND PIPE 2 INCHES AND SMALLER (1 INCH MIN.) SHALL BE TYPE "K" SOFT COPPER WITH FLARED FITTINGS. COMPRESSION FITTINGS MAY BE USED ON 1 1/2 INCH AND 2 INCH PIPE. ALL BRASS FITTINGS USED SHALL BE LEAD FREE PER NSF61-G. PIPE SHALL BE INSTALLED WITH 4 FEET 6 INCHES OF COVER.

ALL UNDERGROUND STRAIGHT LENGTHS OF PIPE LARGER THAN 2 INCHES SHALL BE CLASS 53 CEMENT LINED DUCTILE IRON WITH PUSH-ON JOINTS. PIPE SHALL BE INSTALLED WITH 4 FEET 6 INCHES OF COVER. SEE AWSB WATER MAIN NOTES, CURRENT EDITION FOR APPROVED PIPE, FITTINGS, BOLTS, ETC., FOR WATER LINE INSTALLATION.

MAINTAIN A 10 FOOT HORIZONTAL CLEARANCE FROM EDGE OF WATER LINE TO EDGE OF SANITARY AND STORM SEWER PIPES

MAINTAIN AN 18 INCH MINIMUM VERTICAL CLEARANCE FROM EDGE OF WATER LINE TO EDGE OF SANITARY AND STORM SEWER PIPES WHERE THEY CROSS.

MAINTAIN A 12 INCH VERTICAL CLEARANCE FROM EDGE OF WATER LINE TO EDGE OF GAS, ELECTRIC, ETC.

MAINTAIN A 5 FOOT MINIMUM HORIZONTAL CLEARANCE FROM EDGE OF WATER LINE TO EDGE OF GAS LINE(S), ELECTRIC LINE(S), COMMUNICATION LINE(S), ETC.

REQUIREMENTS FOR AN INSIDE METER SETTING:

1. EASILY ACCESSIBLE (CANNOT BE INSTALLED IN CRAWL SPACE).
2. ADEQUATE HEADROOM (MIN. AREA REQUIRED 4' W X 6' L X 6' H)
3. PROPERLY HEATED
4. FLOOR DRAIN OR SUMP WITHIN FIVE FEET OF METER
5. HOUSELINE NOT LONGER THAN 300 FEET
6. METER MUST BE SET WITHIN ONE FOOT OF WHERE LINE ENTERS BUILDING.

7. IN BUILDINGS WITH INTERIOR METER SETTING WITHOUT BASEMENTS, HOUSELINE MUST BE INSTALLED IN AN AWSB APPROVED SCHEDULE 40 CONDUIT FROM A MINIMUM OF ONE FOOT OUTSIDE FOOTER TO 1" ABOVE FLOOR SLAB (HOUSELINE 2 INCH AND SMALLER).

8. BUILDINGS WITH INTERIOR METER SETTINGS NOT ON OUTSIDE WALL, THE HOUSELINE MUST BE INSTALLED IN A CONTINUOUS AWSB APPROVED SCHEDULE 40 CONDUIT FROM A MINIMUM OF 1 FOOT OUTSIDE BUILDING FOOTER UP THROUGH FLOOR SLAB 1 INCH ABOVE FLOOR (HOUSELINE 2 INCH AND SMALLER).*

9. HOUSELINE INSTALLED UNDER PAVED AREAS FOR INSIDE METER SETTING MUST BE IN AN AWSB APPROVED SCHEDULE 40 CONDUIT.*

IF THE INTERIOR METER SETTING DOES NOT MEET ALL THE ABOVE REQUIREMENTS, THEN THE METER MUST BE INSTALLED AT THE STREET IN A CURB METER PIT OR AN APPROVED ABOVE GROUND HEATED ENCLOSURE.

* MINIMUM CONDUIT SIZE SHALL BE 4" FOR 1" AND 1 1/4" HOUSELINE AND 6" FOR HOUSELINES OVER 1 1/4"

DO NOT SCALE - USE DIMENSIONS ONLY

CITY OF AKRON
DEPARTMENT OF PUBLIC SERVICE
WATER SUPPLY BUREAU

WATER SERVICE AND FIRELINE NOTES

REV. DECEMBER 13, 2023

G-2.0

STANDARD CONSTRUCTION
DRAWING NO.

[Signature]
UTILITIES ENGINEER

AKRON WATER SUPPLY BUREAU STANDARD DRAWINGS FOUND ONLINE AT
<http://www.akronohio.gov/water>



BUILDER:
Habitat for Humanity
of Summit County
2301 Romig Road
Akron, OH 44320

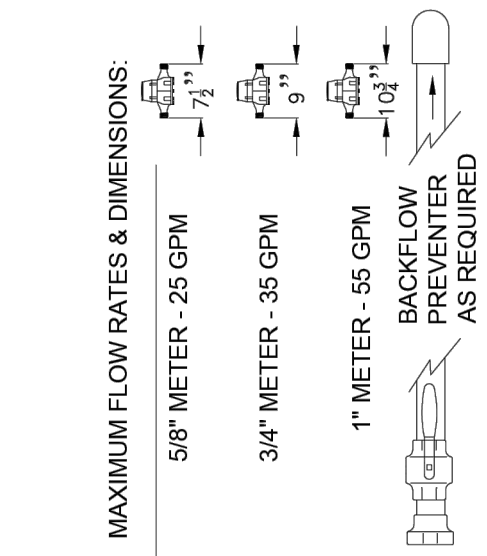
OWNER:
Habitat for Humanity
of Summit County
2301 Romig Road
Akron, OH 4432

REVISIONS:

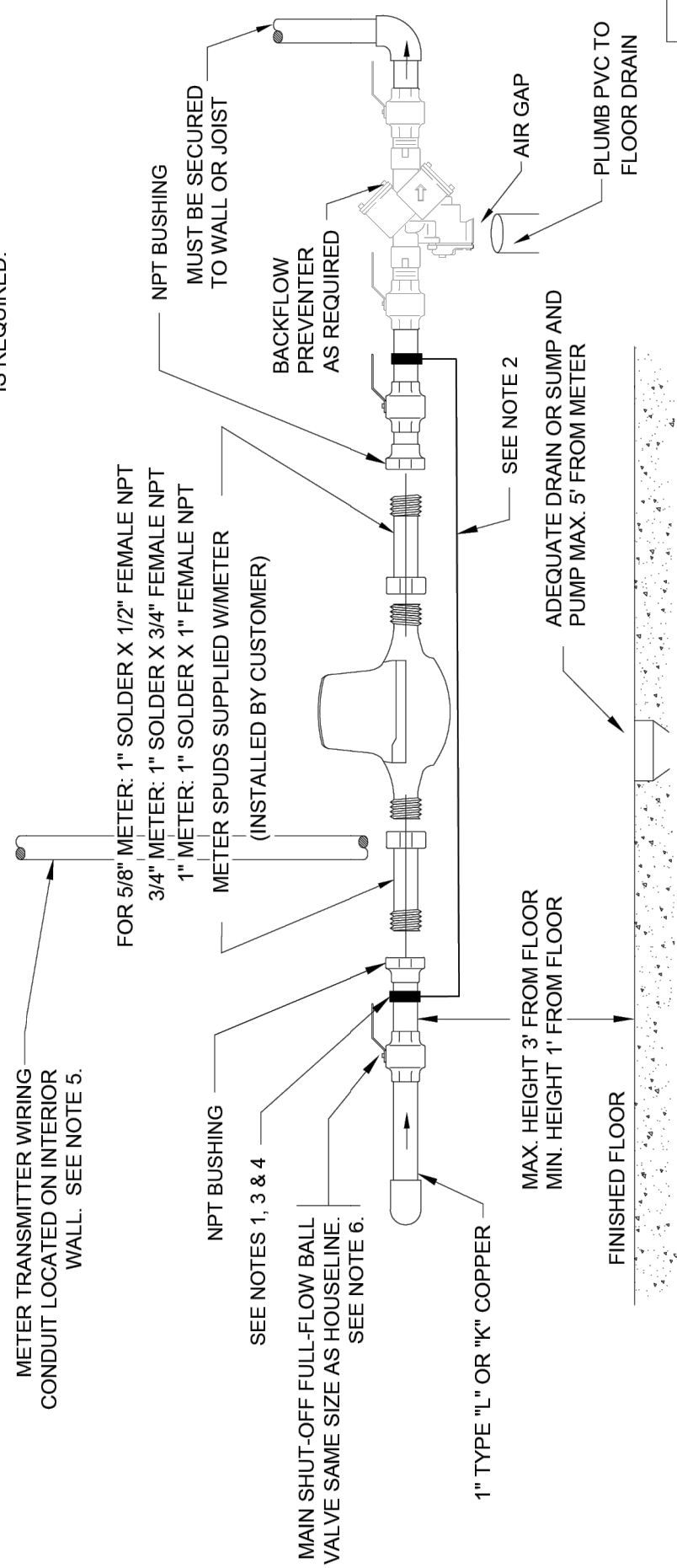
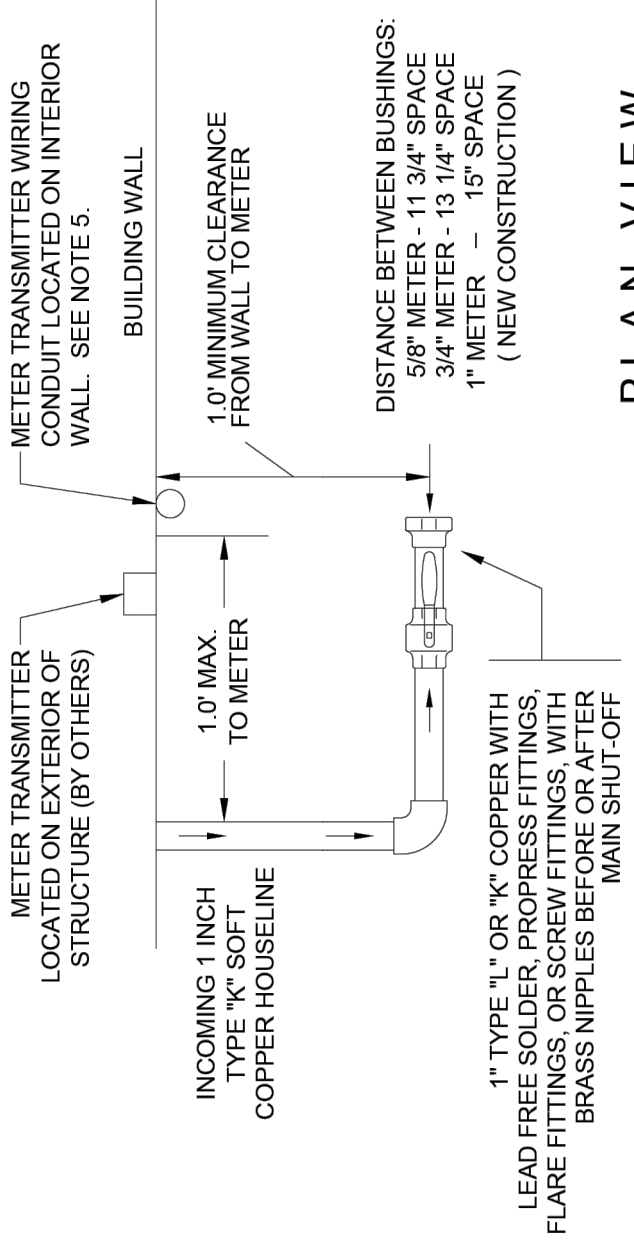
PROJECT #
3107-0007
DATE
2025-12-23

PROJECT NAME:
VERNON ODOM BLVD &
SUPERIOR AVE
SHEET NUMBER:
TOTAL SHEETS:

M-1.0 STANDARD METER SETTINGS - NEW



WHEN JOINING DISSIMILAR METALS A WATER DEPARTMENT APPROVED BRASS TRANSITION FITTING IS REQUIRED.



MINIMUM AREA REQUIRED FOR METER SETTING 4'W x 6'L x 6'H

- NOTES:**
- WATER METER JUMPER GROUNDING INSTALLATION SHALL COMPLY WITH NEC ARTICLE 250 REQUIREMENTS. PREPARE PIPING BY PROPERLY REMOVING ANY CORROSION OR FOREIGN COATING TO BARE METAL FOR GROUNDING CLAMP INSTALLATION. PROVIDE COMPARABLE MATERIAL GROUND CLAMP TO PIPING TO PREVENT GALVANIC CORROSION.
 - PROVIDE MINIMUM #4 AWG SOLID COPPER GROUND WIRE (DIAMETER ≥ 0.204 INCHES)
 - PROVIDE UL LISTED WATER PIPE CLAMP SIZED ACCORDINGLY FOR METALLIC PIPING ON BOTH SIDES AND MINIMUM #4 SOLID COPPER GROUND WIRE (DIAMETER ≥ 0.204 INCHES). USE CAST BRONZE OR BRASS FOR COPPER AND PLAIN OR MALLEABLE IRON FOR GALVANIZED. PROPERLY TIGHTEN ALL SCREWS.
 - CONNECT TO METALLIC WATER PIPING.
 - PROVIDE A 1/2" CONDUIT RUN FROM WITHIN 1 FOOT OF THE WATER METER SETTING, EXTENDING TO AN OUTSIDE WALL, PENETRATING THE WALL A MIN. 3 FEET ABOVE THE OUTSIDE GRADE. THE CONDUIT RUN SHALL NOT EXCEED 100 FEET IN LENGTH. COORDINATE LOCATION WITH AKRON WATER SUPPLY BUREAU.
 - STAB AND COMPRESSION FITTINGS AND RIGHT ANGLE VALVES ARE PROHIBITED.

DO NOT SCALE - USE DIMENSIONS ONLY

CITY OF AKRON
 DEPARTMENT OF PUBLIC SERVICE
 WATER SUPPLY BUREAU

STANDARD METER SETTINGS - NEW
 5/8", 3/4", & 1" ELECTROMAGNETIC METERS

REV. DECEMBER 13, 2023

RAJLO
 UTILITIES ENGINEER

STANDARD CONSTRUCTION
 DRAWING NO. **M-1.0**

AKRON WATER SUPPLY BUREAU STANDARD DRAWINGS FOUND ONLINE AT
<http://www.akronohio.gov/water>

DAVEY Resource Group
 1310 SHARON COPLEY ROAD, P.O. BOX 37
 SHARON-CENTER, OHIO 44274
 (PHONE) 330.590.8004 (FAX) 888.820.8423

BUILDER:
 Habitat for Humanity
 of Summit County
 2301 Romig Road
 Akron, OH 44320

OWNER:
 Habitat for Humanity
 of Summit County
 2301 Romig Road
 Akron, OH 44320

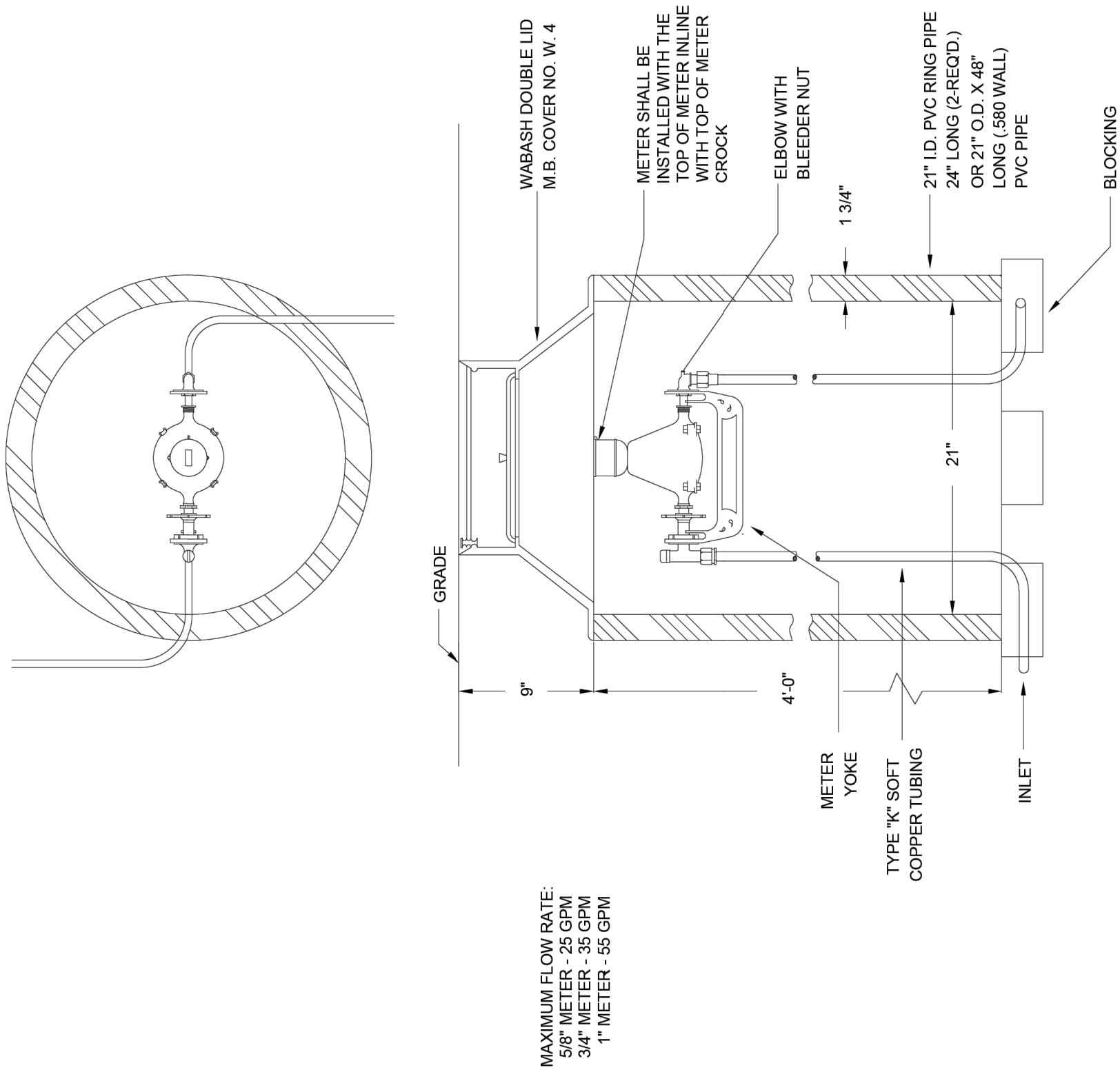
REVISIONS:

DATE	SHEET NUMBER:	TOTAL SHEETS:
2025-12-23		

PROJECT #
 3107-0007

PROJECT NAME:
 VERNON ODOM BLVD & SUPERIOR AVE

M-7.0 STANDARD FOR 1" CURB METER PIT



DO NOT SCALE - USE DIMENSIONS ONLY

CITY OF AKRON
DEPARTMENT OF PUBLIC SERVICE
WATER SUPPLY BUREAU

STANDARD FOR 1" CURB METER PIT

REV. DECEMBER 13, 2023

STANDARD CONSTRUCTION
DRAWING NO.

M-7.0

RAJL
UTILITIES ENGINEER

AKRON WATER SUPPLY BUREAU STANDARD DRAWINGS FOUND ONLINE AT
<http://www.akronohio.gov/water>